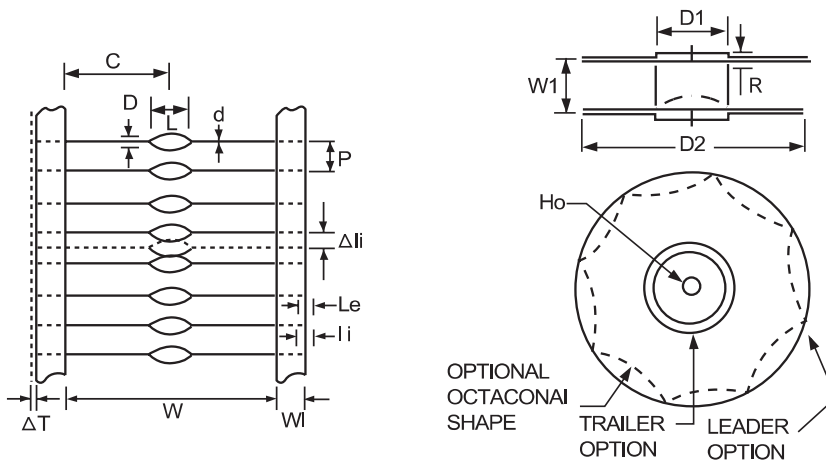


## AXIAL LEADED - FEATURES, TAPING SPECIFICATION AND DIMENSION, CAPACITANCE CHART

### FEATURES:

1. MLC Axial-Lead Capacitor (AD) is built with superior moisture and shock resistant epoxy coating material.  
Produces in high volume by automated processes to ensure uniform conforming coating.
2. The axial lead MLC can be supplied in both bulk or taping form for automatic insertion and sequencing with any other axial lead components.

### TAPING SPECIFICATION AND DIMENSION



ITEM	SYMBOL	DIMENSION
Pitch of component	P	5.08±0.51
Cumulative tolerance of p Over 6 consecutive		±0.15
Tape width	Wt	6.0±1.0
Lead wire protrusion	Le	1.57 max
Lead extension into tape	Li	3.96 max
Off set between tapes	ΔT	0.8 max
Width between tapes	W	52.4±1.5

ITEM	SYMBOL	DIMENSION
Centered	C	26.2±0.76
Core Diameter	D1	34.9-92.1 standard 61.0
Real Diameter	D2	360 max
Core Width	W1	69.9±1.5
Recess Depth	R	9.5 min
Arbor Hole	H0	13.89-38.10
standard		15.9
Deflection Form Nominal Position	Δh	1.2 max

### CAPACITANCE CHART (pF):

	SizeCode	Rated Voltage	COG (NPO)	X7R	Y5V	Z5U
0603/0805	AD10	25 VDC	-----	220,000	470,000-1,000,000	220,000-1,000,000
		50 VDC	10-3,300	220-2,200,000	10,000-2,200,000	1,000-330,000
		100 VDC	10-1,000	220-1,000,000	-----	-----
1206	AD20	25 VDC	-----	1,000,000-2,200,000	1,000,000-2,200,000	-----
		50 VDC	-----	220,000-1,000,000	1,000,000	220,000-1,000,000
		100 VDC	-----	220,000-470,000	-----	-----