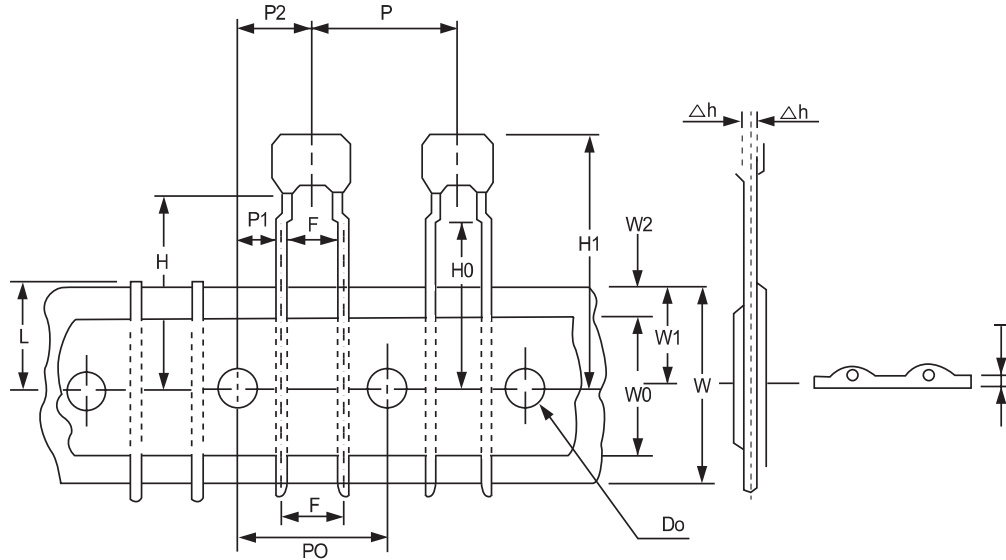


RADIAL LEADED - TAPING SPECIFICATION & PACKING QUANTITY

Taping Specification:



ITEM	SYMBOL	DIMENSIONS (mm)	REMARKS
Pitch of Components	P	12.7±1.0	
Feed hole pitch	PO	12.7±0.3	Cumulative pitch error: ±1.0 MM/20 pitches
Feed hole center to lead	P1	3.85±0.7	
Feed hole center to component center	P2	6.35±1.3	
Lead to lead spacing	F	5.0+0.8/-0.2 OR 2.5+0.8/-0.2	To lead top within tolerance
Component alignment, F - R	h	2.0 max	The alignment from the center of the lead is ±1.0 MM
Tape width	W	18.0-1.0/-0.5	
Adhesive tape width	W0	11.0 mm	
Hole position	W1	9.0±0.5	
Adhesive tape position	W2	3.0 max	Adhesive tape must not protrude from base paper
Height of bottom body from tape center	H	18.0+2.0/-0	$H+12.5\text{mm} \leq H1$
Lead-wire clinch height	H0	16.0±0.5 OR 18.0±0.5	$6.5 \leq H0-W1$
Component height	H1	32.25 max	
Feed hole diameter	D0	4.0±0.3	
Total tape thickness	T	0.7±0.2	

Packing Quantity:

Case Size	Bulk	Taping	
	Quantity per Bag	Quantity per Ammo Box	Quantity per Reel
RD20, RD21	1,000 pcs	2,000 pcs	3,000 pcs